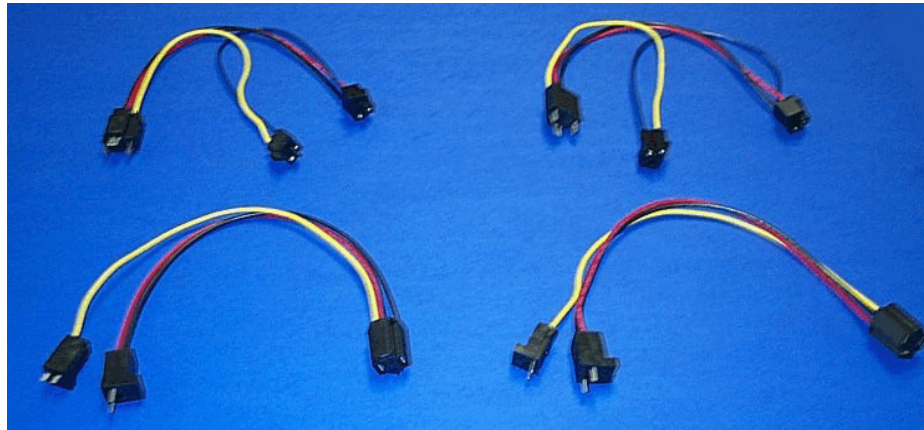
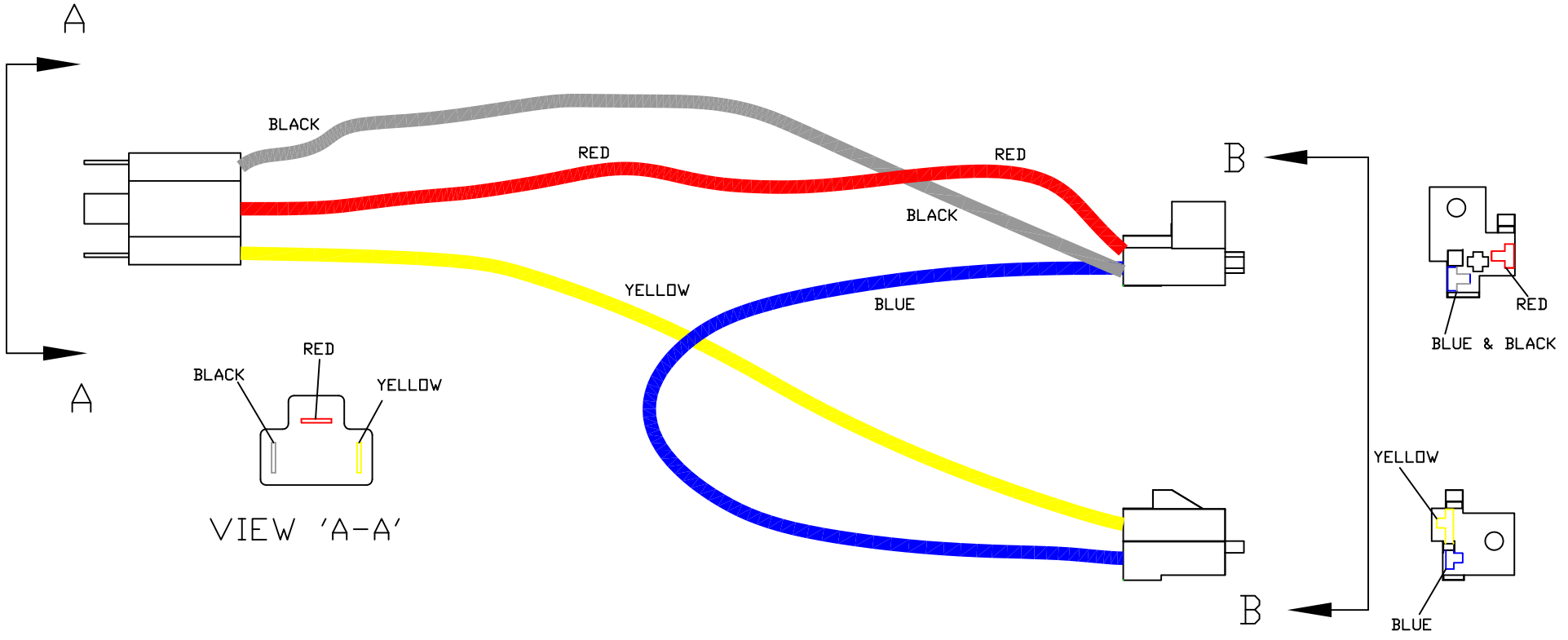


767053 conversion kit for 800037

For use on trucks with low profile four-beam headlight system employing sealed beams #H4701 and #H4703.





A

BLACK

RED

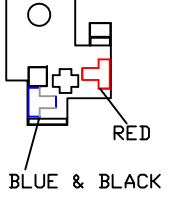
RED

B

BLACK

YELLOW

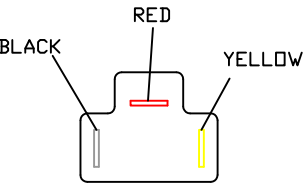
BLUE



BLUE & BLACK

RED

A

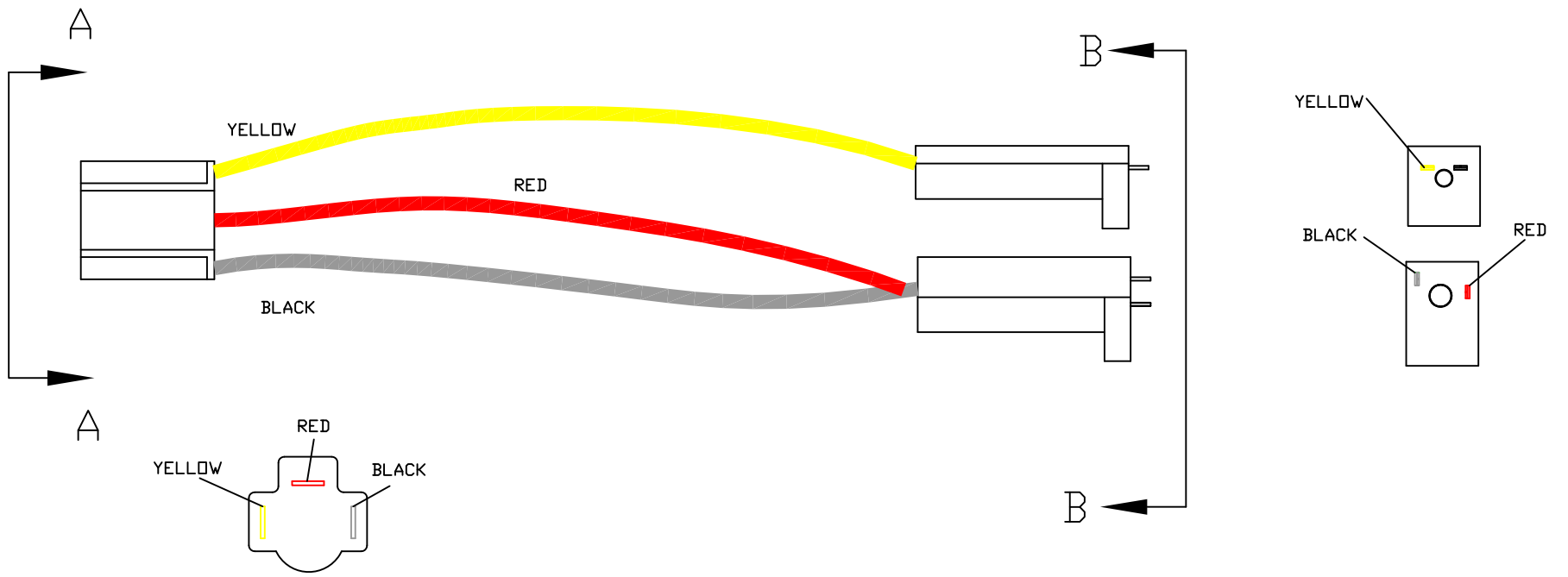


VIEW 'A-A'

YELLOW

BLUE

B



VIEW 'A-A'

INSTALLATION AND OPERATING INSTRUCTIONS FOR SNOWPLOW LAMP NO. 800037 WITH GMC/CHEV CONVERSION KIT 767053

- Lamps should be mounted in the desired location on the snow plow frame ensuring that the snow plow lamps beams are not obstructed by any portion of the plow or vehicle.
- WIRING INSTALLATION - Refer to diagram**
 NOTE: Prior to lamp/harness assembly, please apply provided lithium grease to snowplow lamp plugs on under hood harness, ensuring all connections are thoroughly covered.
 NOTE: Neglecting to grease plugs will drastically reduce operating life of plow lamps/harness and will void manufacturer's warranty.
 - Plug lamp adapter leads from conversion kit 767053 into sealed beam connectors on AEM wiring harness (800029).
 - Plug lamp adapter leads to existing vehicle's headlamp bulbs (sealed beams #H4701 and #H4703.).
 - Connect harness power connection (supplied in conversion kit AEM #767053) to 3 prong plug on AEM wiring harness (right hand and left hand side).
 - Plug harness power connection into female (3 contact) connector which was removed from left hand side vehicle headlamp, ie; into vehicle wiring harness. Repeat for right hand side.
 - Referring to wiring diagram, complete wiring connections of turn signal and parking lights to vehicle's electrical lighting system using Quick-Splice connectors included in bagged parts.
 - Drill a 9/16" diameter hole in the firewall at the most convenient location. Insert rubber grommet in the drilled hole to protect wire insulation.
 - Pull AEM wire harness through firewall from the engine compartment into the cab.
 - Referring to wiring diagram, connect 6 female tab connectors on end of each harness to toggle switch.
 - Select suitable location on dash to mount the toggle switch and drill a 15/32" diameter hole through the dashboard.
 - Apply switch identification label to dash by removing protective backing from label and pressing label over switch hole. Make sure switch is positioned with respect to label so that snowplow lamps are "ON" when switch toggle is in the upper position.
 - Remove knurled nut from the toggle switch; insert switch through the drilled hole and re-install the knurled nut. Tighten nut securely.
- Check for proper operation. Turn on headlight switch and check that with toggle switch in lower position, only the vehicle headlamps are on. With toggle switch in upper position, only the snow plow headlamps should be on. Dimmer switch should select high and low beams on both headlamps. Turn signal lamps should be on in same sequence and at same time as vehicle turn signal lamps. Parking lamps should be on at same time as vehicle parking lamps. If any lamp does not operate correctly, re-check wiring against wiring diagram and make necessary corrections in wiring hookup. Adjust the plow lamp beams to project the same distance ahead of the vehicle as compared to the original headlights.
- Installer of these snow plow lamps must certify that installation conforms to applicable Federal Motor Vehicle Safety Standards.

